

TRAP Antibody
Rabbit mAb
Catalog # AP91800**Specification**

TRAP Antibody - Product Information

Application	WB, IHC, ICC, IP
Primary Accession	P13686
Reactivity	Rat
Clonality	Monoclonal
Other Names	
TRAP; SPENCDI; TrATPase;	
Isotype	Rabbit IgG
Host	Rabbit
Calculated MW	36599 Da

TRAP Antibody - Additional Information

Dilution	WB~~1:1000 IHC~~1:100~500 ICC~~N/A IP~~N/A
Purification	Affinity-chromatography
Immunogen	A synthesized peptide derived from human Tartrate Resistant Acid Phosphatase
Description	Involved in osteopontin/bone sialoprotein dephosphorylation. Its expression seems to increase in certain pathological states such as Gaucher and Hodgkin diseases, the hairy cell, the B-cell, and the T-cell leukemias.
Storage Condition and Buffer	Rabbit IgG in phosphate buffered saline , pH 7.4, 150mM NaCl, 0.02% sodium azide and 50% glycerol. Store at +4°C short term. Store at -20°C long term. Avoid freeze / thaw cycle.

TRAP Antibody - Protein Information**Name** ACP5**Function**

Involved in osteopontin/bone sialoprotein dephosphorylation. Its expression seems to increase in certain pathological states such as Gaucher and Hodgkin diseases, the hairy cell, the B-cell, and the T- cell leukemias.

Cellular Location

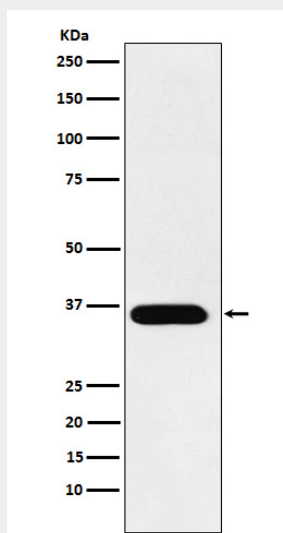
Lysosome.

TRAP Antibody - Protocols

Provided below are standard protocols that you may find useful for product applications.

- [Western Blot](#)
- [Blocking Peptides](#)
- [Dot Blot](#)
- [Immunohistochemistry](#)
- [Immunofluorescence](#)
- [Immunoprecipitation](#)
- [Flow Cytometry](#)
- [Cell Culture](#)

TRAP Antibody - Images



Western blot analysis of Tartrate Resistant Acid Phosphatase expression in A431 cell lysate.